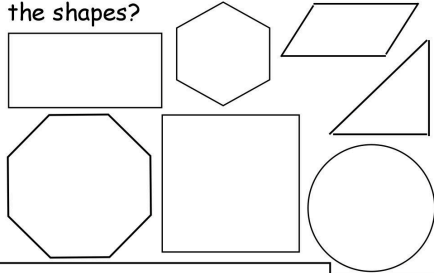


If each tile is 4" x 4" then what would the perimeter of this tile panel be?



Can you find tiles of each of these shapes in the gallery? Can you name the shapes?



**H** Draw your favourite symmetrical and asymmetrical design.

If you were to add up all the part circles on this tile how many complete circles would you have?

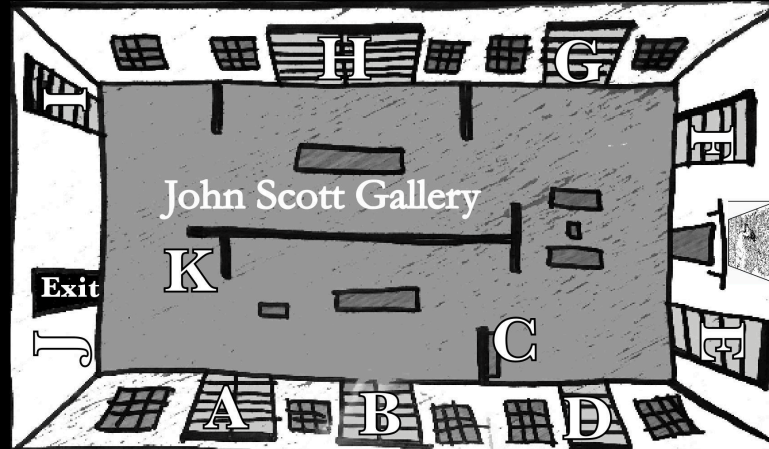


**I**



Calculate how many tiles are on display here.

**J**



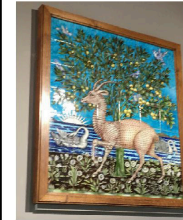
**G** What, do you think, is ratio of brown and yellow on this tile?



**F** How many complete circles can you see in this set of tiles?



If each tile took 20 minutes to paint, how many hours did this beautiful tile design take to finish?



**E** What proportion of the tile panel is made up of this tile?

Can you express that as a decimal? And as a percentage?

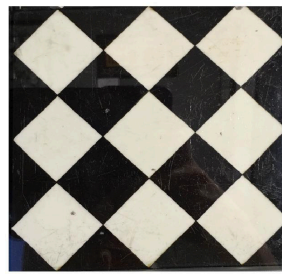


How many different tile designs are used to create this panel?

**K**

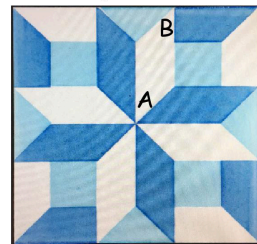


**A** Are all the triangles on this tile the same size?



**B** What do angles A and B measure?

Are they acute?

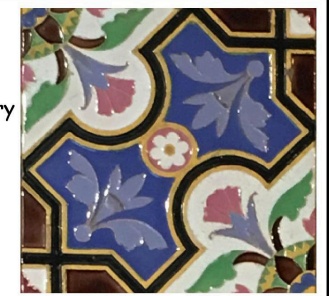


**C** Can you find pairs of tiles that have lines of reflecting, rotating and diagonal symmetry here?

**D** If this tile measures 6" x 6" then what, would you estimate, the inner square measures?



Where are the lines of symmetry on this tile?



Ironbridge  
BIRTHPLACE OF INDUSTRY



John Scott Gallery



trail ks2