

# Totally terrific



# trail

at The JACKFIELD TILE MUSEUM

As you explore the museum today can you find these objects?



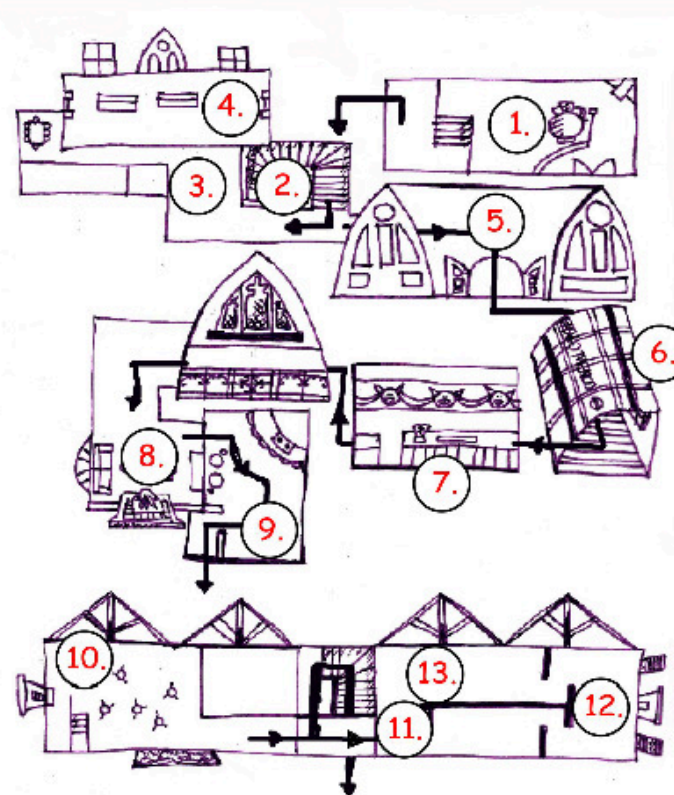
1.

Is the jug taller than you? \_\_\_\_\_  
What is written on it? \_\_\_\_\_



2.

What shape is this? \_\_\_\_\_



13.

Before you go can you find these 9 tiles?  
How many animals can you see? \_\_\_\_\_



3.

Which ship is the smallest? \_\_\_\_\_  
How many big ships are there? \_\_\_\_\_



4.

What can you see around the bear?  
\_\_\_\_\_



5.

Can you see the pattern on his feathers?  
What colour is his head?  
\_\_\_\_\_



12.

Do these tiles look smooth? \_\_\_\_\_



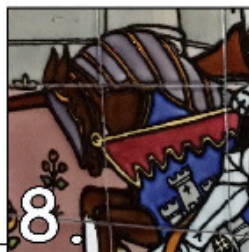
6.

Can you hear the train?  
What does the sign say?  
\_\_\_\_\_



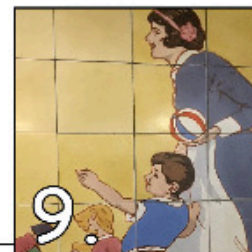
7.

Are there any other animals?  
\_\_\_\_\_



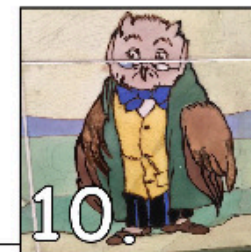
8.

Which horse is your favourite?  
\_\_\_\_\_



9.

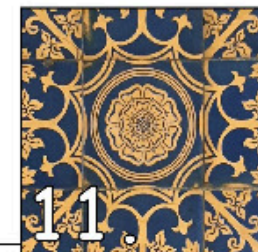
What is this little boy looking at?  
\_\_\_\_\_



10.

Who are his friends?

1. \_\_\_\_\_
2. \_\_\_\_\_
3. \_\_\_\_\_



11.

Which two colours can you see in this pattern?  
\_\_\_\_\_